

CHECKLIST

Unless otherwise noted, all works are from the collection of The Museum of Modern Art and have been donated by Editions Schellmann, Munich and New York. Works dated 1967 through 1974 and 1985 to the present are published by Editions Schellmann. Works dated from 1975 through 1984 are published by Editions Schellmann & Klüser. Dates enclosed in parentheses do not appear on the works. Dimensions given are composition or plate size, in inches and centimeters, height preceding width.

Joseph Beuys German, 1921–1986

Painting Version I–90. 1961–75, published 1976. Oil paint and fat with torn hole.
29¹/₁₆ × 22¹/₁₆" (76 × 57.7 cm). 89.911

Untitled from the portfolio *Minneapolis Fragments*. (1977). Lithograph and rubber stamp.
25¹/₄ × 35¹/₄" (64.2 × 89.5 cm).

Untitled from the portfolio *Minneapolis Fragments*. (1977). Lithograph, printed in white,
with rubber stamp and pencil additions, 25¹/₁₆ × 35¹/₄" (64.3 × 89.5 cm).

Iphigenia/Titus Andronicus. (1985). Photographic negatives stamped with brown paint
between glass plates in iron frame, 28¹/₈ × 21¹/₁₆" (71.5 × 54.8 cm).

Sandro Chia Italian, born 1946 89.912

Figure Looking Out. 1982. Etching with chine collé, 13⁷/₈ × 10¹/₁₆" (35.2 × 27.5 cm).

Christo (Christo Javacheff) American, born Bulgaria 1935

Wrapped Floors. 1983. Lithograph, printed in color, with collage, 22¹/₄ × 28¹/₁₆"
(56.6 × 71.6 cm). 89.897

Curtains for La Rotunda, Project for Milan from the portfolio *Five Urban Projects*. (1985).
Photograph, serigraph, and collotype, printed in color, with collage and pencil
additions, 13¹/₁₆ × 10¹/₁₆" (35.4 × 27.9 cm). 89.896

Lower Manhattan Wrapped Building, Project for New York from the portfolio *Five Urban
Projects*. (1985). Photograph, serigraph, and collotype, printed in color, with collage
and pencil additions, 13¹/₁₆ × 10¹/₁₆" (35.4 × 27.9 cm). 89.895

Francesco Clemente Italian, born 1952

Conversion to Her. 1986. Etching and aquatint, printed in color, 37¹/₁₆ × 43¹/₁₆"
(95.1 × 110.6 cm). 89.900

Enzo Cucchi Italian, born 1950

Giotto's Elephant. Copublished with Galerie Bernd Klüser, Munich, 1986. Lithograph,
printed in color, with collage in brass frame box, 11 × 50¹/₁₆" (28 × 128.1 cm).
254.89

Hanne Darboven German, born 1941

Harburg Sand. (1988). Collotype and serigraph, printed in color, 22³/₁₆ × 23³/₁₆"
(56.8 × 59.3 cm). 89.892

Peter Halley American, born 1953 89.902

Untitled from the portfolio *A Tour of the Monuments of Passaic, New Jersey*. Copublished
with The Spring Street Workshop, New York, 1989. Line engraving, printed in color,
9³/₄ × 17¹/₄" (24.8 × 43.8 cm).

Untitled from the portfolio *A Tour of the Monuments of Passaic, New Jersey*. Copublished
with The Spring Street Workshop, New York, 1989. Line engraving, printed in color,
9¹/₁₆ × 15⁵/₁₆" (24.6 × 39.7 cm). 89.903

Keith Haring American, born 1958 89.889.1-3

Totem. 1989. Woodcut, printed in color, on three sheets, 73¹/₂ × 21¹/₁₆" (186.7 × 55.4 cm).

Donald Judd American, born 1928 265.89

Untitled from the portfolio *For Joseph Beuys*. Copublished with Galerie Bernd Klüser,
Munich, 1986. Woodcut, printed in color, 15³/₄ × 23³/₁₆" (40 × 59.7 cm).

Jannis Kounellis Greek, born 1936 89.893

Untitled from the series *Dance Fragments*. (1982). Photogravure, 29¹/₄ × 23³/₁₆"
(74.3 × 58.9 cm).

Untitled from the series *Dance Fragments*. (1982). Photogravure, 26¹/₁₆ × 21¹/₁₆"
(67.5 × 55.1 cm). 89.894

Sol LeWitt American, born 1928

Untitled from the portfolio *A Circle Divided into Eight Equal Parts, with Colors
Superimposed in Each Part*. Copublished with Achenbach Graphics, Düsseldorf, 1989.
Serigraph, printed in color, 29¹/₁₆ × 29¹/₁₆" (76.1 × 76.1 cm). 89.898

Richard Long British, born 1945

Untitled from the portfolio *River Avon Mud Drawings*. 1989. Lithograph, printed in color,
25¹/₂ × 37¹/₁₆" (65 × 96 cm). 89.913

Robert Longo American, born 1953

Men in the Cities (Eric). 1985. Lithograph, 71¹/₈ × 31¹/₂" (182.5 × 80 cm). 89.905

Men in the Cities (Gretchen). 1985. Lithograph, 67 × 30¹/₈" (170.2 × 77.1 cm). 89.906

Robert Mapplethorpe American, 1946–1989

Untitled from the portfolio *America*. (1988). Lithograph, printed in color, 26¹/₄ × 21¹/₁₆"
(66.7 × 55.4 cm). 89.890

Untitled from the portfolio *America*. (1988). Lithograph, printed in color, 26¹/₄ × 21¹/₄"
(66.7 × 55.3 cm). 89.891

Gerhard Merz German, born 1947

Untitled from the portfolio *And I Am Also an Architect*. 1989. Aquatint, printed in color,
42¹/₂ × 32" (108 × 81 cm). 89.914

Untitled from the portfolio *And I Am Also an Architect*. 1989. Aquatint, printed in color,
42¹/₂ × 32" (108 × 81 cm). 89.915

Mimmo Paladino Italian, born 1948

Mute. 1985. Etching and aquatint, printed in color with collage, 58¹/₁₆ × 29¹/₄"
(148.8 × 74.3 cm). 89.904

Larry Rivers American, born 1923 89.916

Dutch Masters. 1964–68. Offset, printed in color, 18¹/₈ × 17³/₄" (48 × 45.1 cm).

Tim Rollins & K.O.S. Rollins, American, born 1955

White Alice. 1989. Offset and serigraph with gesso additions, 28¹/₈ × 47¹/₁₆"
(71.5 × 121.5 cm). 89.901

David Salle American, born 1952

Untitled from the series *Theme for an Aztec Moralist*. (1983). Lithograph, printed in color,
45¹/₁₆ × 33¹/₁₆" (116.4 × 86.2 cm). 89.907

Untitled from the series *Theme for an Aztec Moralist*. (1983). Lithograph, printed in color,
46 × 34¹/₁₆" (116.9 × 86.5 cm). 89.908

Andy Warhol American, 1930–1987

Joseph Beuys, State II. (1980–83). Serigraph with flocking, 39¹/₁₆ × 32" (101.2 × 81.3 cm).

Gift of Mr. and Mrs. Arnold Smoller in memory of Esta Josephs, 1985. 31.85

Leonardo da Vinci "The Annunciation" from the series *Details of Renaissance Paintings*.

(1984). Serigraph, printed in color, 25¹/₁₆ × 37¹/₁₆" (65.9 × 96.3 cm). 89.909

Paolo Uccello "St. George and the Dragon" from the series *Details of Renaissance Paintings*.

(1984). Serigraph, printed in color, 25⁷/₁₆ × 37¹/₄" (65.7 × 94.7 cm). 89.910

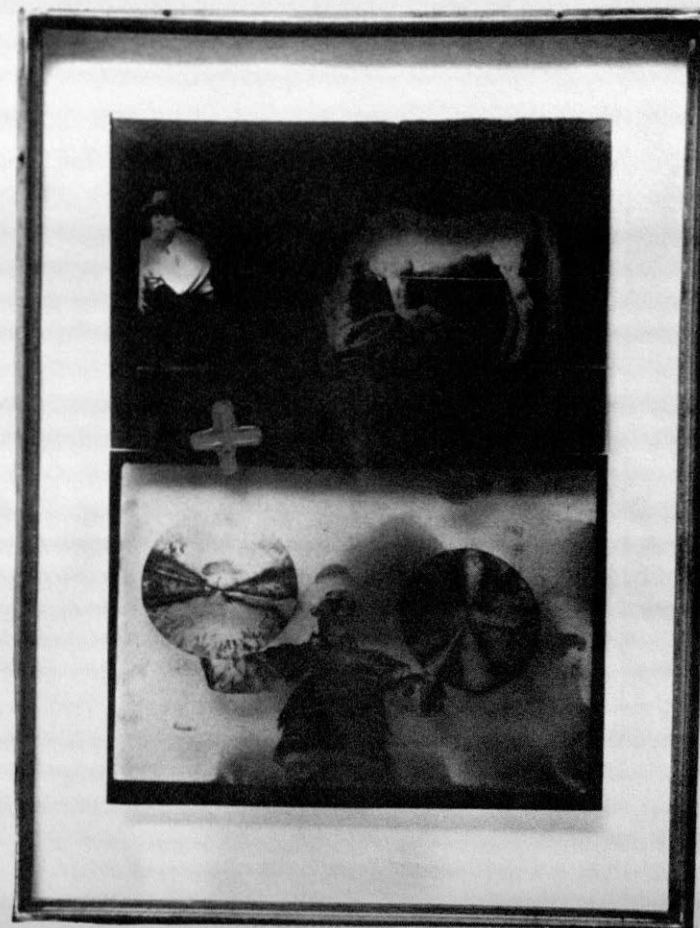
Sandro Botticelli "Birth of Venus" from the series *Details of Renaissance Paintings*. (1984).

Serigraph, printed in color, 27³/₁₆ × 40" (69.1 × 101.7 cm). 89.917

MoMAExh_1534_MasterChecklist

FOR 20 YEARS

EDITIONS SCHELLMANN



THE MUSEUM OF MODERN ART

NEW YORK

November 16, 1989–March 13, 1990