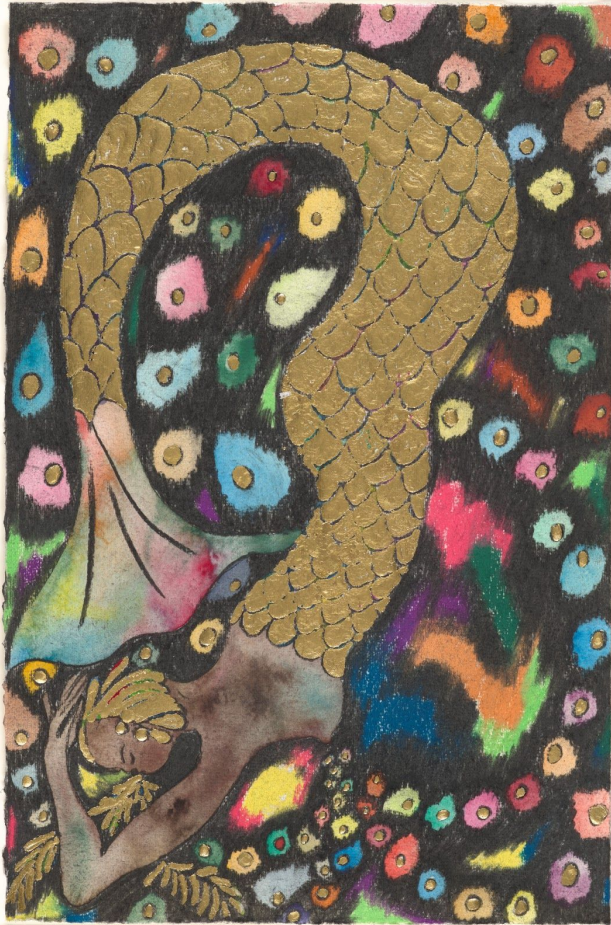


Mondays with MoMA

STEP 1 - Look Closely



To get a closer look, visit this website, then click on the image for a larger view:
[mo.ma/2Sefsdm](https://www.moma.org/artists/2Sefsdm)

Questions:

Look closely at this image and make a list of words that come to mind.

What colors do you notice?

What shapes do you see?

What do you notice about the main figure?

STEP 2: Learn More

This painting, by Chris Ofili, is called *Nymph Dive (Rainbow)*. Ofili's works draw on a wide range of influences, including mythology, Catholic imagery, and Black popular culture. He used watercolor, oil pastels, gold leaf and charcoal on paper to make

Nymph Dive (Rainbow). He is known for using unconventional materials such as resin, beads, cutouts from magazines, and even elephant dung.

STEP 3: Activity

Write an A to Z Poem

Materials: Paper, pencil, colored pencils (optional)

1. On a sheet of paper, write the alphabet from A to Z in a column with one letter in every line (it is okay if you spill over onto another sheet of paper).
2. Looking at *Nymph Dive (Rainbow)*, try to find a word or phrase starting with every letter of the alphabet. (You can do this with people or by yourself). You do not have to go in order - if you get stuck on one letter, move on and come back to it later.
3. When your poem is done, you can copy it onto another sheet of paper. Try playing with different lettering, making the first letter decorative, or adding other embellishments.

STEP 4: Share!

Choose a different artwork, and write a poem with someone else! And, you can email your poems to us at MoMA: schoolprograms@moma.org.



Volkswagen of America is proud to be MoMA's lead partner of education.

Generous support for School and Teacher Programs is provided by the Carroll and Milton Petrie Education Program Endowment, the William Randolph Hearst Endowment Fund, and the Mimi and Peter Haas Endowment Fund for Elementary School Programs.

Additional funding is provided by the Ducommun and Gross Family Foundation and by the Annual Education Fund.

Image: Chris Ofili. *Nymph Dive (Rainbow)*. 2019. Watercolor, oil pastel, gold leaf, and charcoal on paper. Acquired through the generosity of Ronnie Heyman in memory of Donald B. Marron. © 2020 Chris Ofili

MoMA